

They might take your keys



...but they won't take your car



Car security with built-in **intelligence**

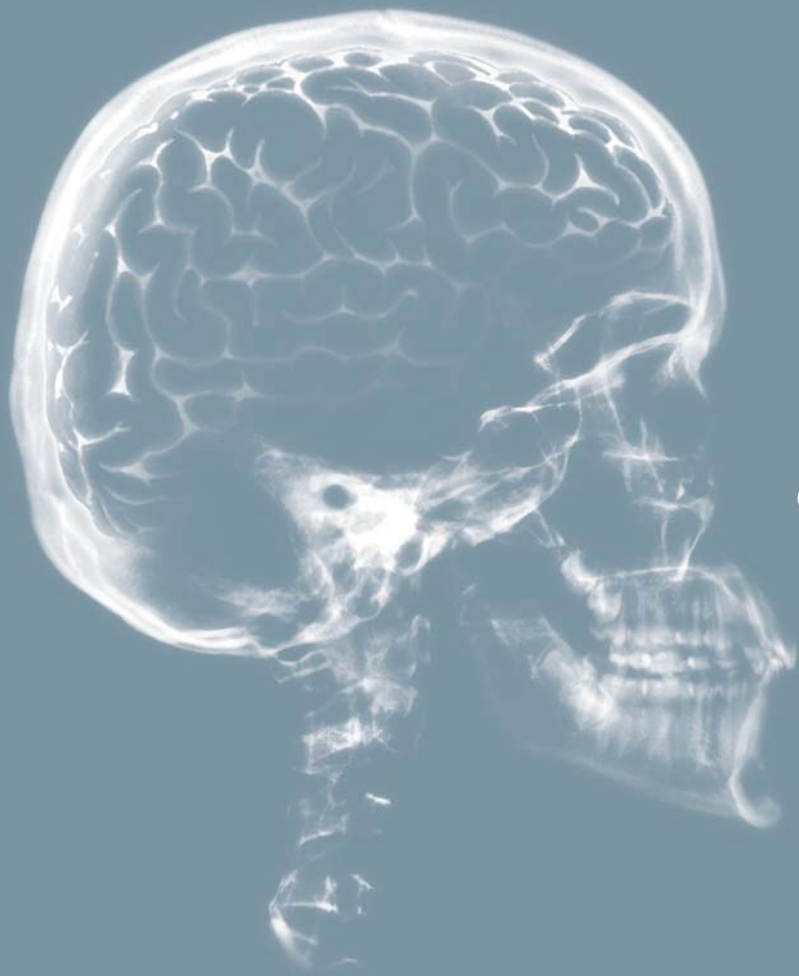
# Model Feature Summary

Feature	S1	S4	S12	S30	S32	S34
Method of Arming	Radio	Radio	OE	Radio	OE	Radio
Immobilisation Circuits	-	1	-	2	1	1
'Key Theft Protection' (via Keypad)	-	Y	-	Y	Y	Y
Auto-arm Auto-rearm (Passive Arming)	Y	Y	Y	Y	Y	Y
Ignition Detection Circuit	Y	Y	Y	Y	Y	Y
Door "+" Protection Circuit	-	-	Y	Y	Y	Y
Door "-" Protection Circuit	Y	Y	Y	Y	Y	Y
Combined Boot/Bonnet "-" Protection Circuit	Y	Y	Y	Y	Y	Y
Closed Loop Protection Circuit (or Internal Panic Button Facility)	Acc 8	Acc 8	-	Acc 8	Acc 8	Acc 8
Ultrasonic Interior Sensors	Y	Y	Y	Y	Y	Y
Additional, Single-stage Sensor Socket	-	-	-	Y	Y	Y
Additional, Dual-stage Sensor Socket with Pre-warn Facility	-	-	-	Y	Y	Y
Ultrasonic Interior Sensor Disable Facility	Y	Y	Y	Y	Y	Y
Facility to Upgrade to Two-button Remote	Y	Y	-	Y	-	Y
In-built Central Door Locking Control (Full)	Neg	Full	Neg	Full	Neg	Full
Total Closure from Extended CDL Pulse	Y	Y	-	Y	-	Y
Alarm Armed Output	Acc 1	Acc 1	Acc 1	Acc 1	Acc 1	Acc 1
Additional Siren/Pager Output	Acc 2	Acc 2	Acc 2	Acc 2	Acc 2	Acc 2
Total Closure Output	-	Acc 1	-	Acc 3	-	Acc 3
Boot Release/Total Open Output	-	Acc 2	-	Acc 4	-	Acc 4
Remote Engine Start/Stop Output (Additional Module Required)		-		Acc 4		Acc 4
Interior Light Illumination Output	-	-	-	Acc 5	Acc 5	Acc 5
Headlight Illumination Output	-	-	-	Acc 6	Acc 6	Acc 6
Second Stage Unlock Output	-	-	-	Acc 7	-	Acc 7
Hazard Light Signalling	Y	Y	Y	Y	Y	Y
LED Colour	Red	Red	Red	Tri-colour	Tri-colour	Tri-colour
Trigger Identification Via LED Flash-back	Y	Y	Y	Y	Y	Y
Battery Back-up Data Siren (Thatcham)	-	-	-	Y	Y	Y
High-power Audio Siren	Y	Y	Y	-	-	-
External Panic Facility from Remote	Y	Y	-	Y	-	Y
Ignition Operated PIN Override	Y	Y	Y	Y	Y	Y
Ignition Operated Radio Key Teaching	Y	Y	-	Y	-	Y
Facility to Connect Keypad/Touch Key Override	Y	Y	Y	Y	Y	Y

Dealer stamp



Car security with built-in **intelligence**



Car security with built-in **intelligence**

## Market **Leading** Products

Established in 1992, Sigma has a long history of producing and supplying a number of the world's leading vehicle manufacturers with cutting edge vehicle security systems.

Our new S Series range continues this tradition, providing the latest technology, functionality and legendary reliability, to deliver the most advanced vehicle security system money can buy.

Innovative new features include:

| **'Key theft protection'** designed to stop your vehicle being taken even if your keys are stolen

| **'Anti hi-jack'** offering unrivalled security features in the event of a car hi-jack

| **Multi-channel remote** for user-friendly added functionality

The S Series is designed to work independently as a full remote control system linked to the vehicle's central door locking, or to interface with the manufacturer's pre-installed remote locking system.

All models are manufactured to the highest European certification standards, including Thatcham approval for the appropriate insurance-approved systems.

So if you require the best, look no further than the new Sigma S Series range of vehicle security systems, from the UK's leading car security company.

Car security with built-in **intelligence**



# Standard Systems

## S1



### Remote Alarm System

- | Two single-button radio keys
- | Perimeter detection
- | Ignition detection
- | Ultrasonic interior protection
- | Closed loop protection circuit
- | Built-in negative CDL control
- | Two accessory outputs and usual Sigma diagnostics and programmability
- | Compact, high-power audio siren

## S4



### Remote Alarm Immobiliser System

- | Two single-button radio keys
- | Perimeter detection
- | Ignition detection
- | Ultrasonic interior protection
- | Closed loop protection circuit
- | Built-in full CDL control
- | Single circuit immobilisation with 'key theft protection' option
- | Two accessory outputs and usual Sigma diagnostics and programmability
- | Compact, high-power audio siren

## S12



### Upgrade Alarm System

- | Operated from the vehicle manufacturer's existing remote controls
- | Perimeter detection (positive or negative)
- | Ignition detection
- | Ultrasonic interior protection
- | Built-in negative CDL control
- | Two accessory outputs and usual Sigma diagnostics and programmability
- | Compact, high-power audio siren





## S30



### Remote Alarm Immobiliser System (Thatcham Category 1 & L1 Approved)

- | Two single-button radio keys
- | Perimeter detection (positive or negative)
- | Ignition detection
- | Ultrasonic interior protection
- | Closed loop protection circuit
- | Built-in full CDL control
- | Passive arming, dual-circuit immobilisation with 'key theft protection' option
- | Seven accessory outputs
- | Sockets for additional sensors and usual Sigma diagnostics and programmability
- | Compact battery back-up siren and MK2 keypad included
- | Anti-tamper casing

## S32



### Upgrade Alarm System (Thatcham Category 2 to 1 & L2 to L1 Approved Upgrade)

- | Two single-button radio keys
- | Perimeter detection (positive or negative)
- | Ignition detection
- | Ultrasonic interior protection
- | Closed loop protection circuit
- | Built-in full CDL control
- | Single circuit immobilisation with 'key theft protection' option
- | Seven accessory outputs
- | Sockets for additional sensors and usual Sigma diagnostics and programmability
- | Compact battery back-up siren included
- | Single point immobiliser

## S34



### Upgrade Alarm System (Thatcham Category 2 to 1 & L2 to L1 Approved Upgrade)

- | Operated from the vehicle manufacturer's existing remote controls
- | Perimeter detection (positive or negative)
- | Ignition detection
- | Ultrasonic interior protection
- | Closed loop protection circuit
- | Built-in negative CDL control
- | Single circuit immobilisation with 'key theft protection' option
- | Four accessory outputs
- | Sockets for additional sensors and usual Sigma diagnostics and programmability
- | Compact battery back-up siren included
- | Single point immobiliser

